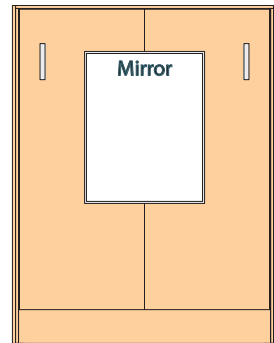
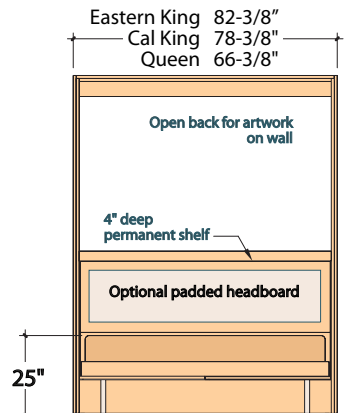


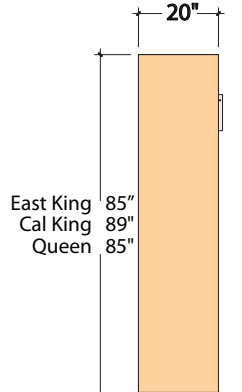
Queen & King size



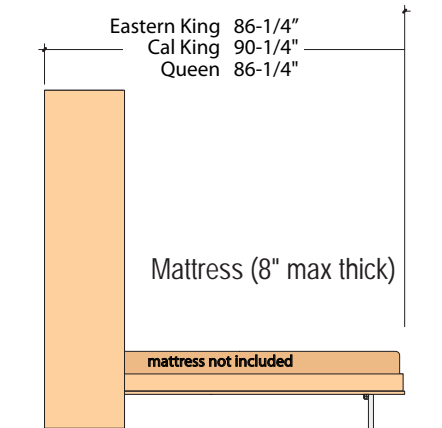
Front view;
Bed up



Front view;
Bed down

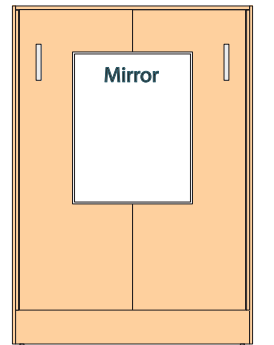


Side view;
Bed up

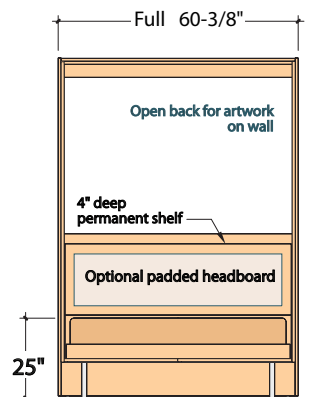


Side view;
Bed down

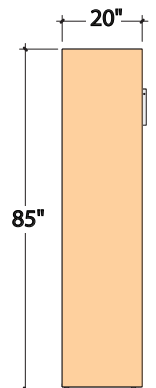
Full-size



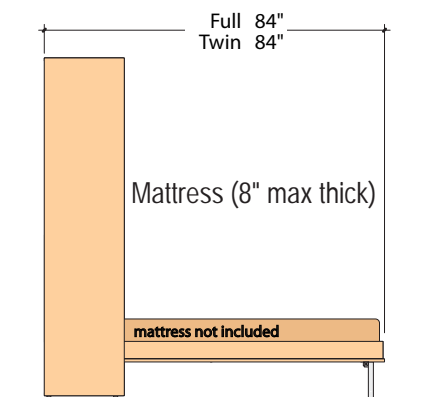
Front view;
Bed up



Front view;
Bed down

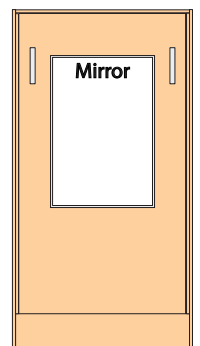


Side view;
Bed up

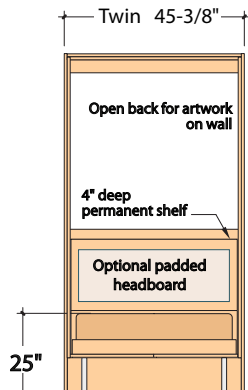


Side view;
Bed down

Twin-size



Front view;
Bed up



Front view;
Bed down

- This page shows features and dimensions of the Twin, Full, Queen & King-size WallBeds in both the Broadway and Symphony Series.
- The Broadway Series is built in melamine over particle board. The Symphony Series is built in Maple veneer over particle board. See Finish Sheet or panel samples for Broadway and Symphony Series finishes.
- WallBed installation requires only a simple attachment to the wall at the top of the cabinet; no drilling into the floor.
- All WallBeds coordinate in height, depth, and finishes with the TableBeds and cabinets in the corresponding series.
- Mattress floats on steam-bent hardwood European slat system for a great night's sleep.